



Upper East Verde Habitat Improvement Project  
February 2020-2021

Amberle Jones - Region 6 Aquatics Program Manager

# Outline

- Background
- Phase 1
- Phase 2
- Future





# Background

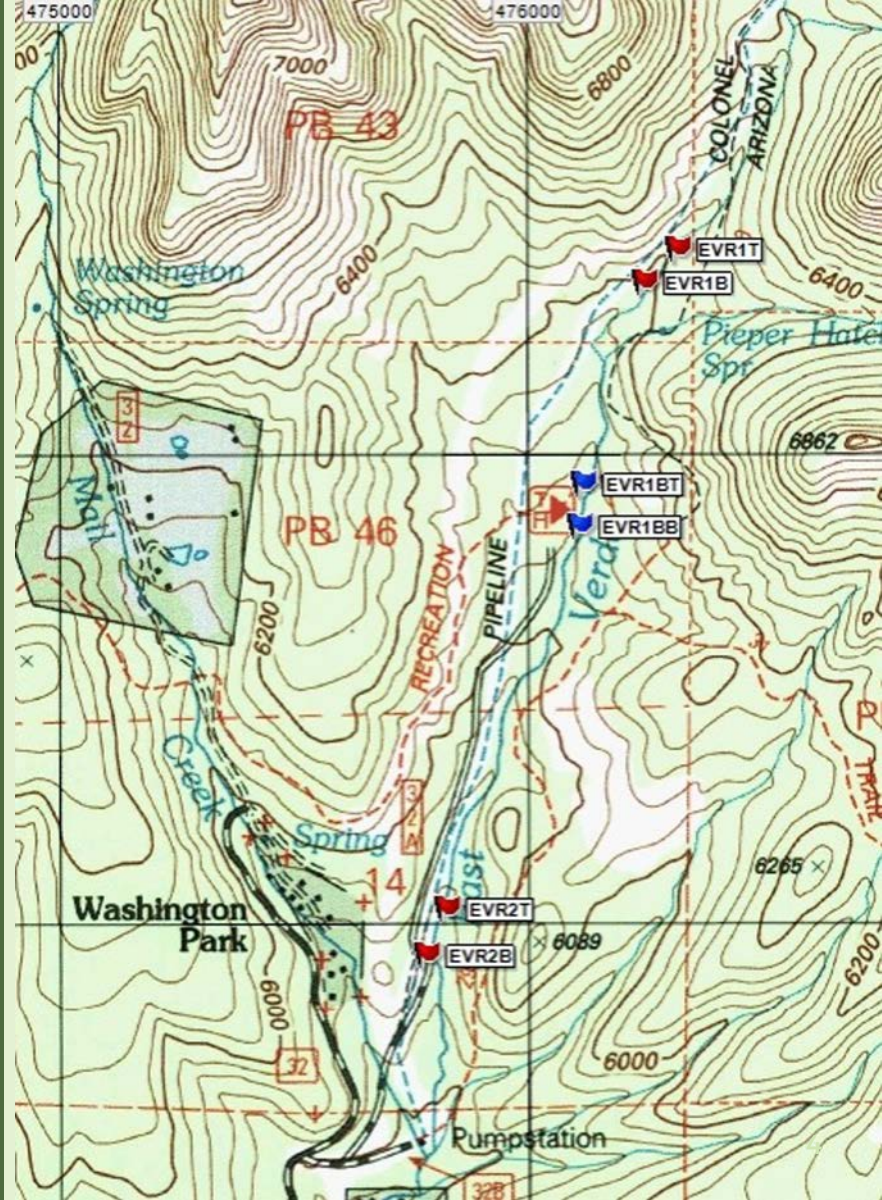
## Upper East Verde River

- Wild Rainbow Trout Population and Recreational Rainbow Trout Gila Trout
- Catch and release, artificial fly and lure only from headwaters to SRP pumphouse and then statewide regulations downstream
- Low base flow
- Recent fire and flooding
  - Incised sections of stream to bedrock
  - Marginal in-stream habitat

# Background

## Upper East Verde River Fish Surveys

- 2010
- 2014
- 2016





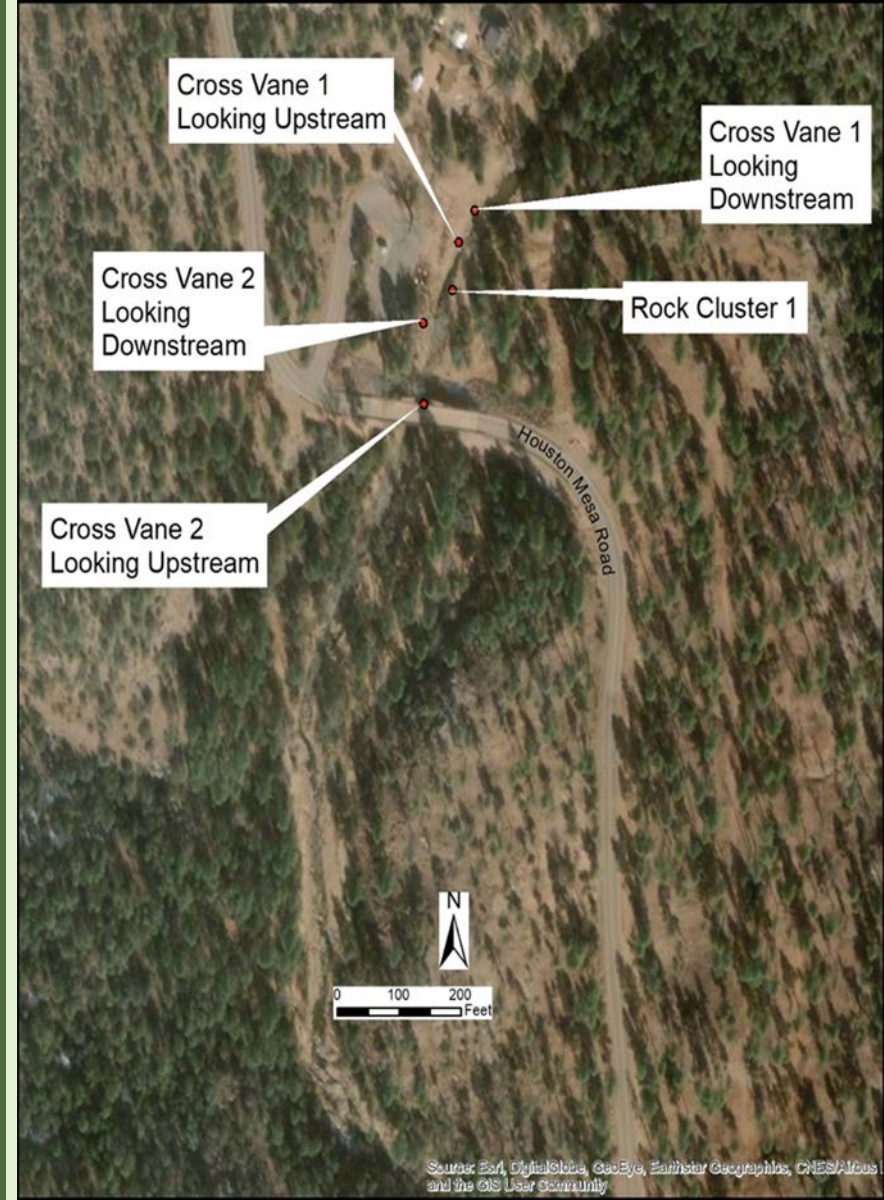
## Phase 1 - Stream Habitat Improvement

January - February 2020

- Third Crossing
- Second Crossing

## Third Crossing

- Two rock cross-vane weirs
- Rock clusters
- Willow poles



## Cross Vane Weirs



## Rock clusters



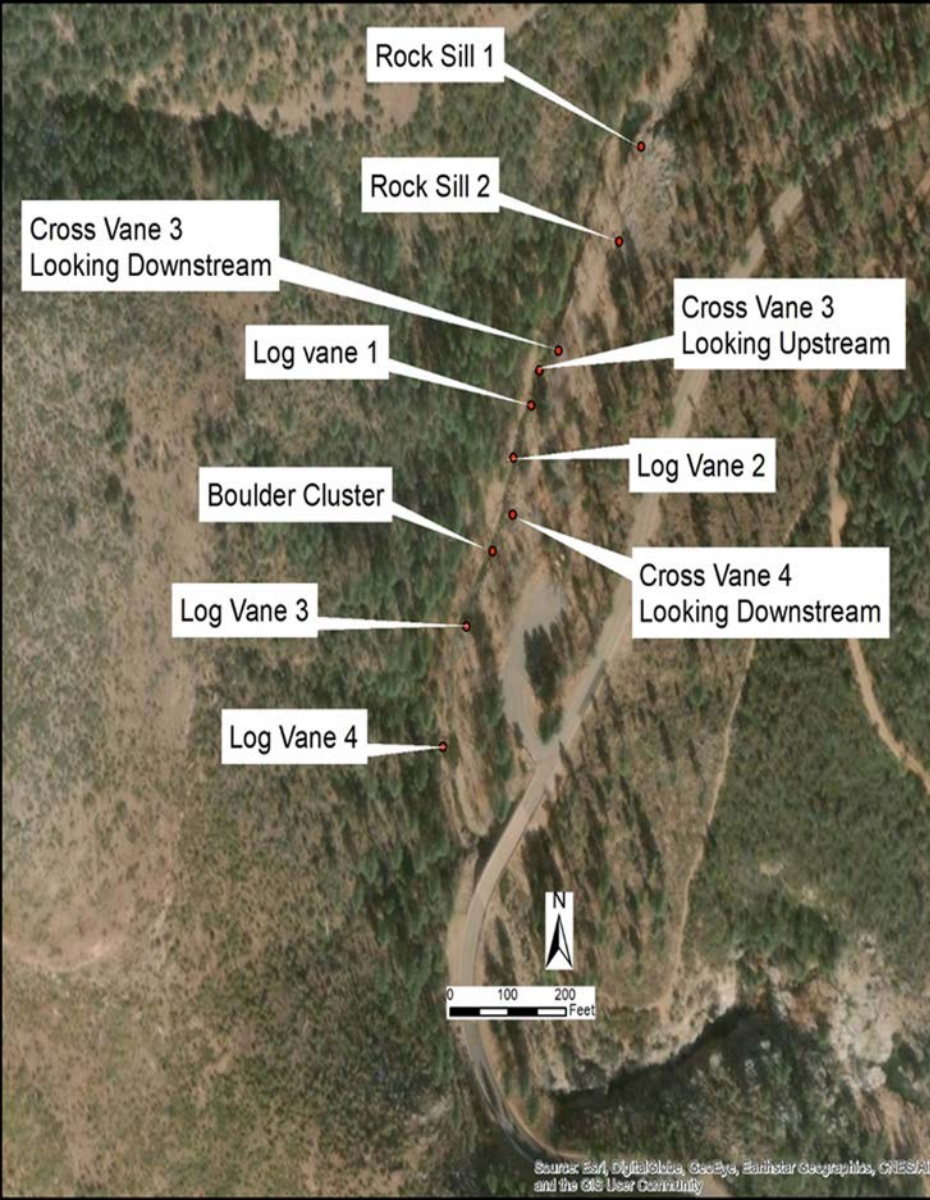


## Willow Poles



## Second Crossing

- Two rock sills
- Two rock cross-vane weirs
- Boulder clusters
- Four log vanes
- Willow poles

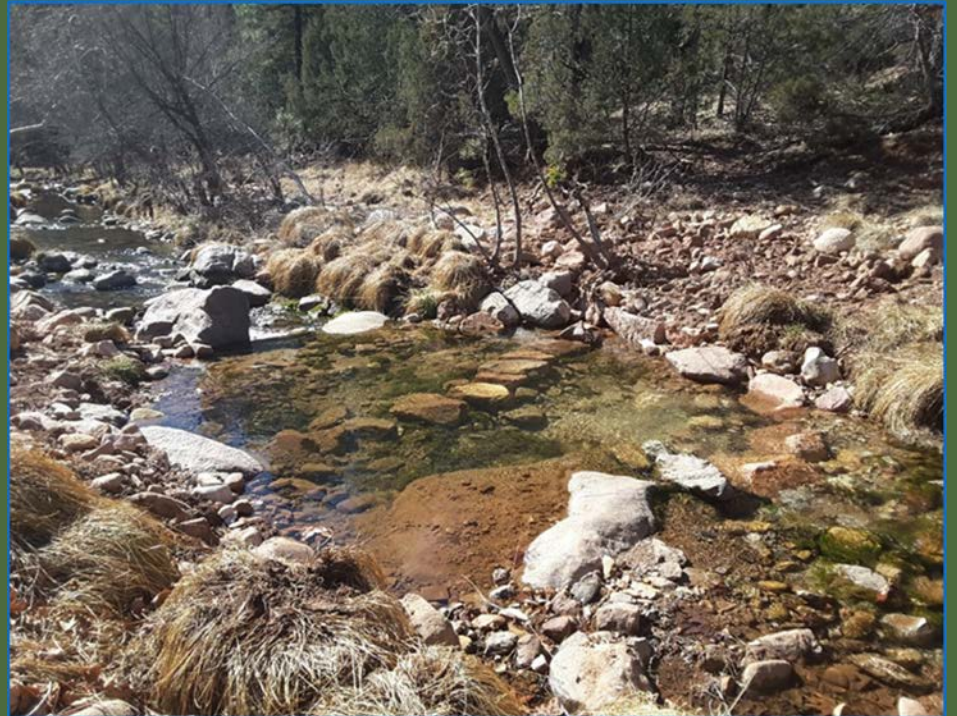


## Rock Sill





## Rock Cross Vane Weir





## Log Vane





## Phase 2 - Stream Habitat Improvement Washington Park

Log Weirs  
February 2021

- Four sites
- Logs used to create pools and capture sediment
- Rocks and leaves placed on the upstream side of structures to aid in sediment collection



## Two Field Days

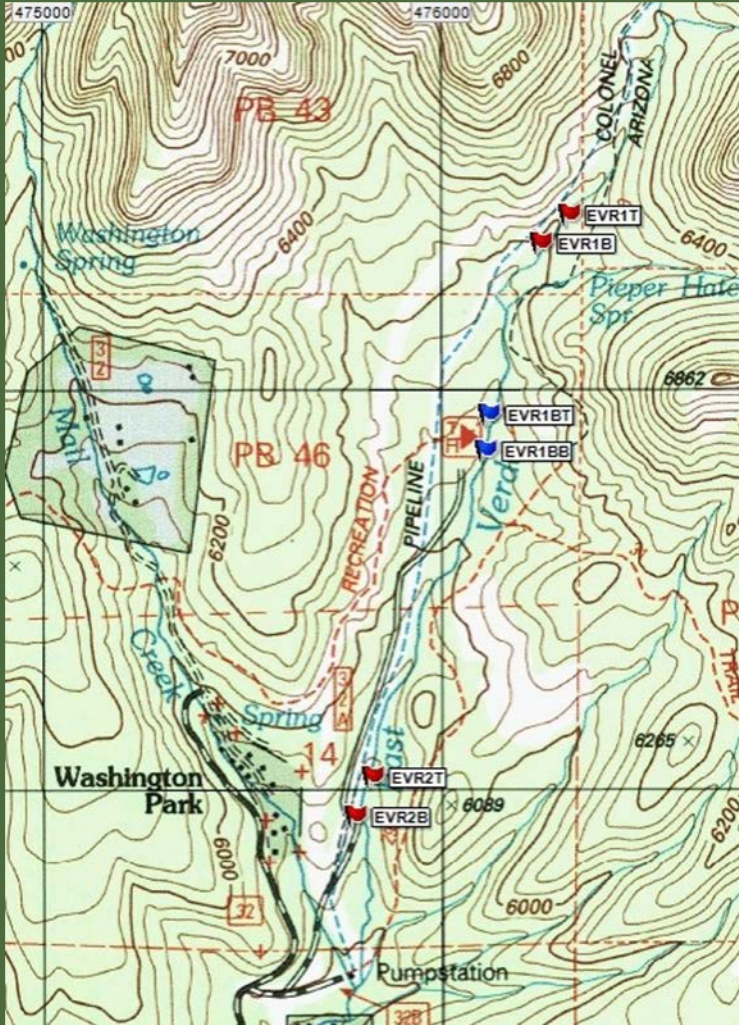
- Over 20 volunteers
- Multiple agencies and groups
  - Natural Channel Design
  - Tonto National Forest
  - Mogollon Sporting Association
  - Payson Flycaster/Gila Trout Chapter of Trout Unlimited
  - Zane Grey Chapter of Trout Unlimited (Phoenix)
  - Old Pueblo Chapter of Trout Unlimited





Are they working?





## Future Plans this summer

### Upper East Verde

- Population surveys
- Structure assessments
- Identify additional locations
- Evaluate and identify solutions for cut bank at Canyon Creek

Year	EV1	EV1B	EV2
2009	3,972	-	4,120
2010	471	-	0
2014	1,159	-	0
2016	2,119	1,005	0
2023	?	?	?



THANK YOU



Trout Unlimited Chapter 530

