



Lees Ferry Trout Fishery

David Rogowski

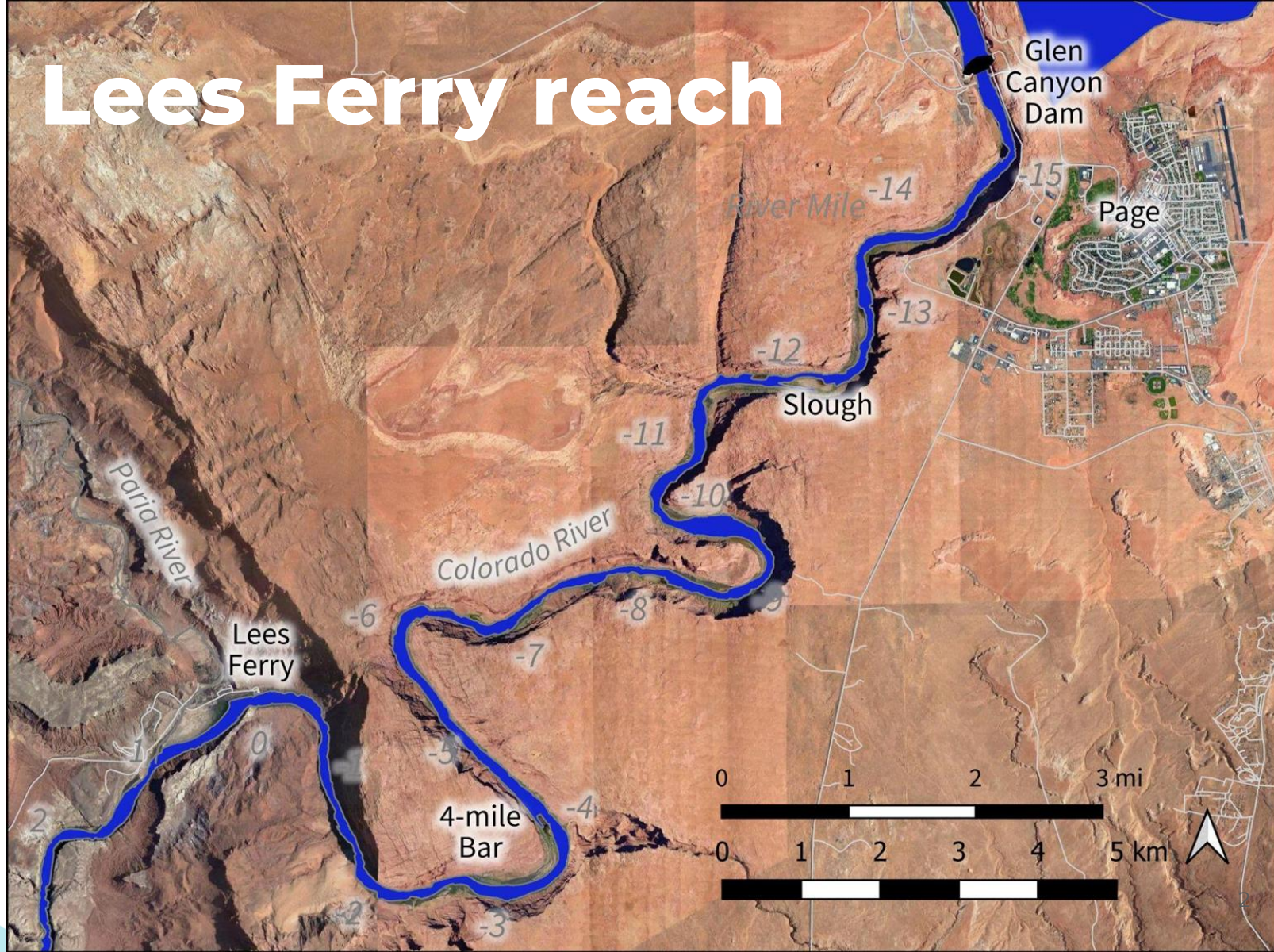
Fale Fonken

John Fennell

Trenton Schipper



Lees Ferry reach



Lees Ferry Trout Fishery

Managed as a Rainbow Trout fishery by the Department

1. Set regulations
 - a. Gear
 - b. Harvest
2. Stock fish or not



History of the trout fishery

- Began with the closure of Glen Canyon Dam
- Department stocked Rainbow Trout along with other fishes (Brook Trout, Cutthroat Trout, Kokanee salmon, etc.)
- Stocking ended in 1997 when most Rainbow Trout in the system were wild produced
- Experimental stocking in 2018-2019

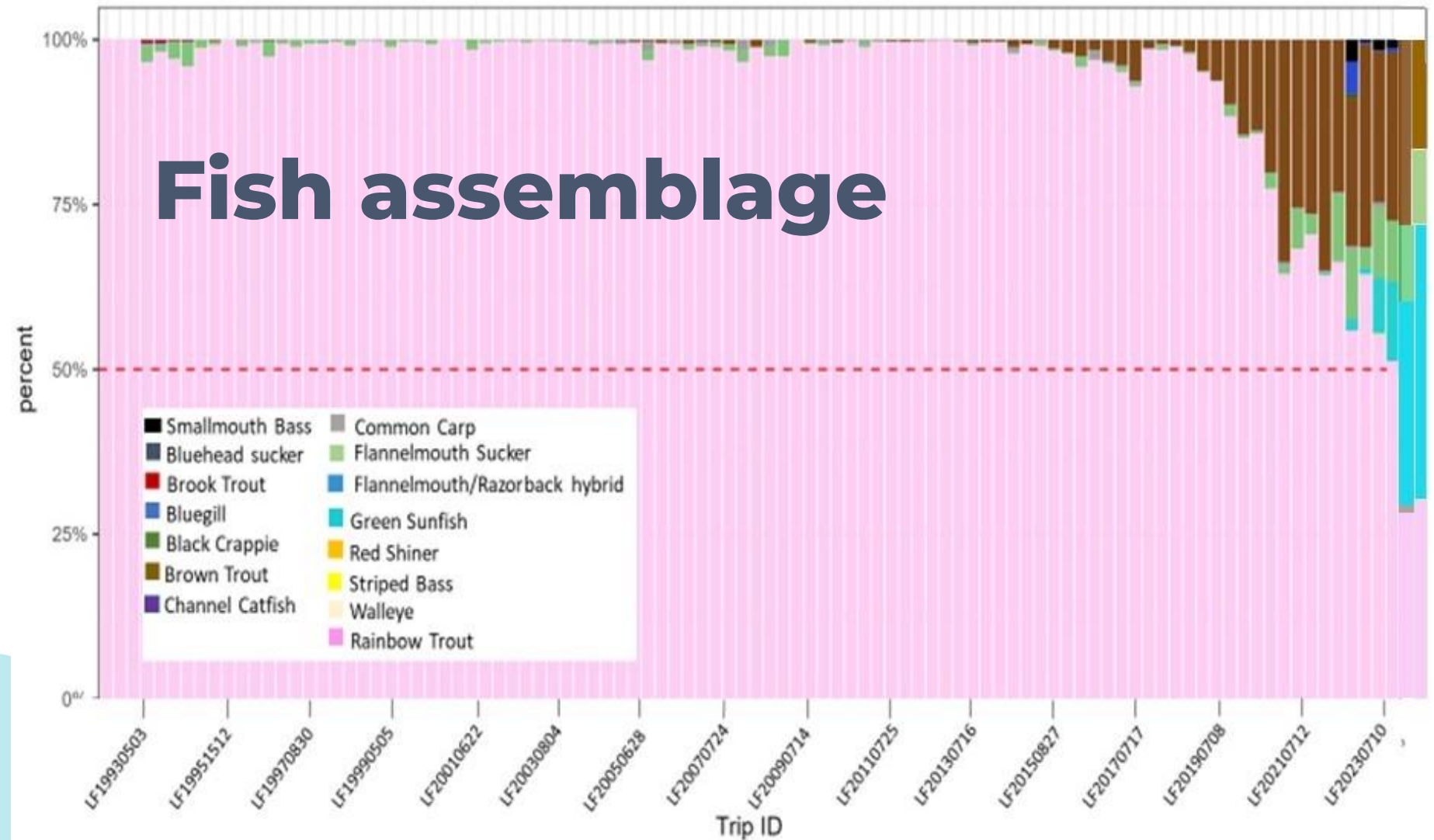


AZGFD monitoring

1. Electrofishing - 3 times per year (spring, summer, fall)
 - a. Relative abundance
 - b. Distribution of fishes
 2. Angler (creel) surveys
 - a. Species targeted
 - b. Fish/hour
 - c. Management question
 3. Game camera - count boats
 - a. Angler usage
- Replaced with: a joint project between USGS and AZGFD - "Trout Reproduction and Growth Project"

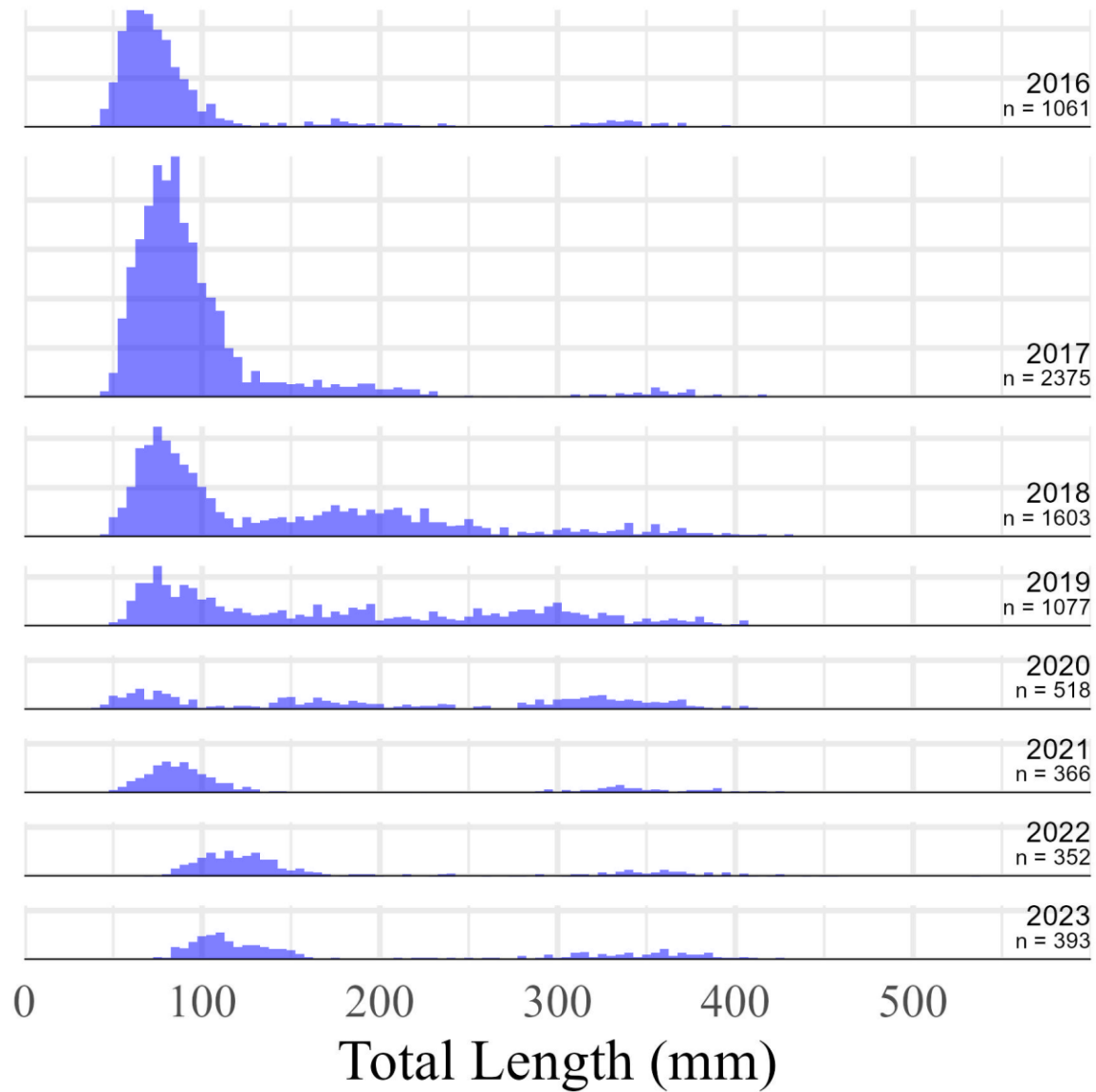


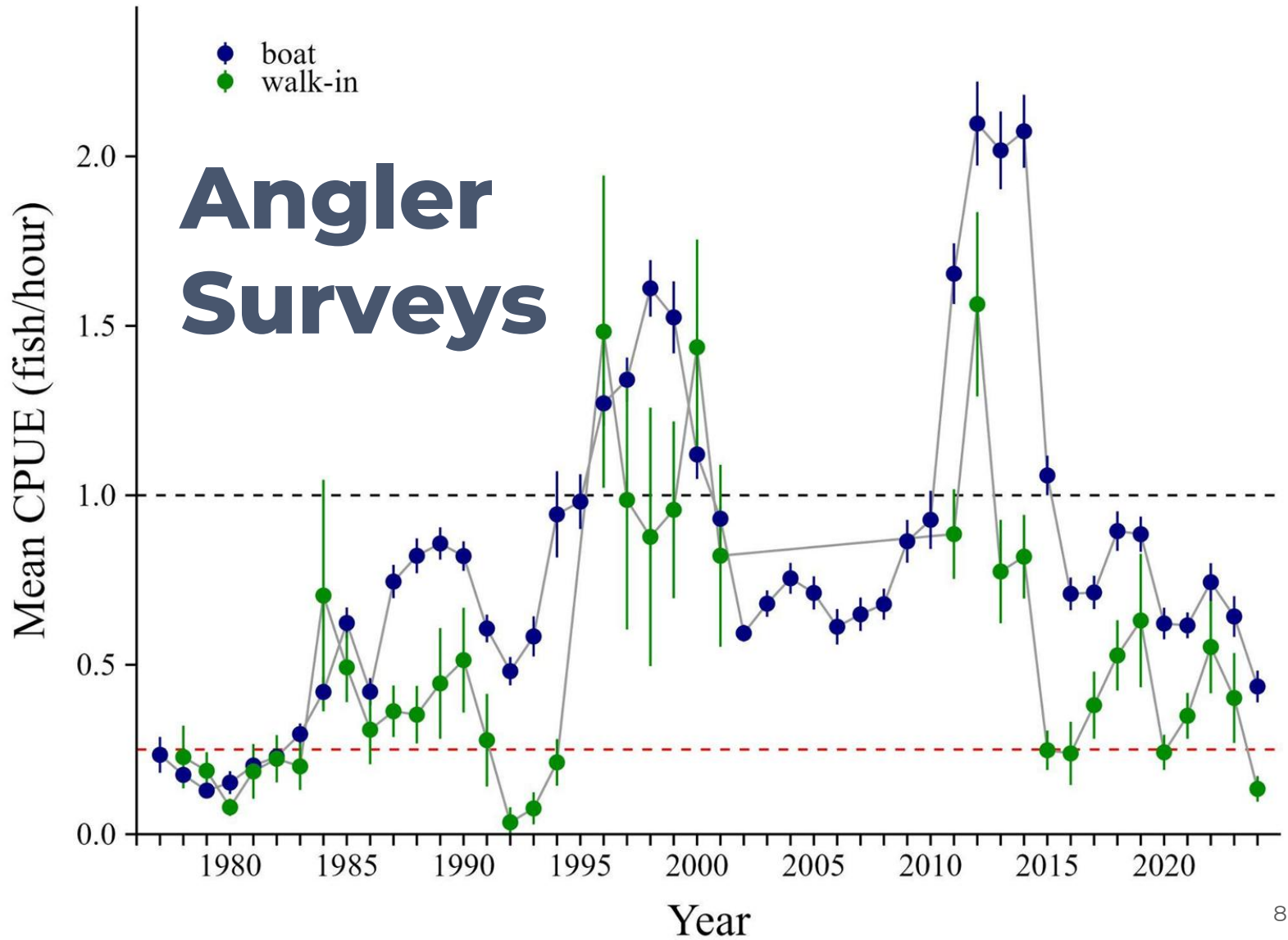
Fish assemblage



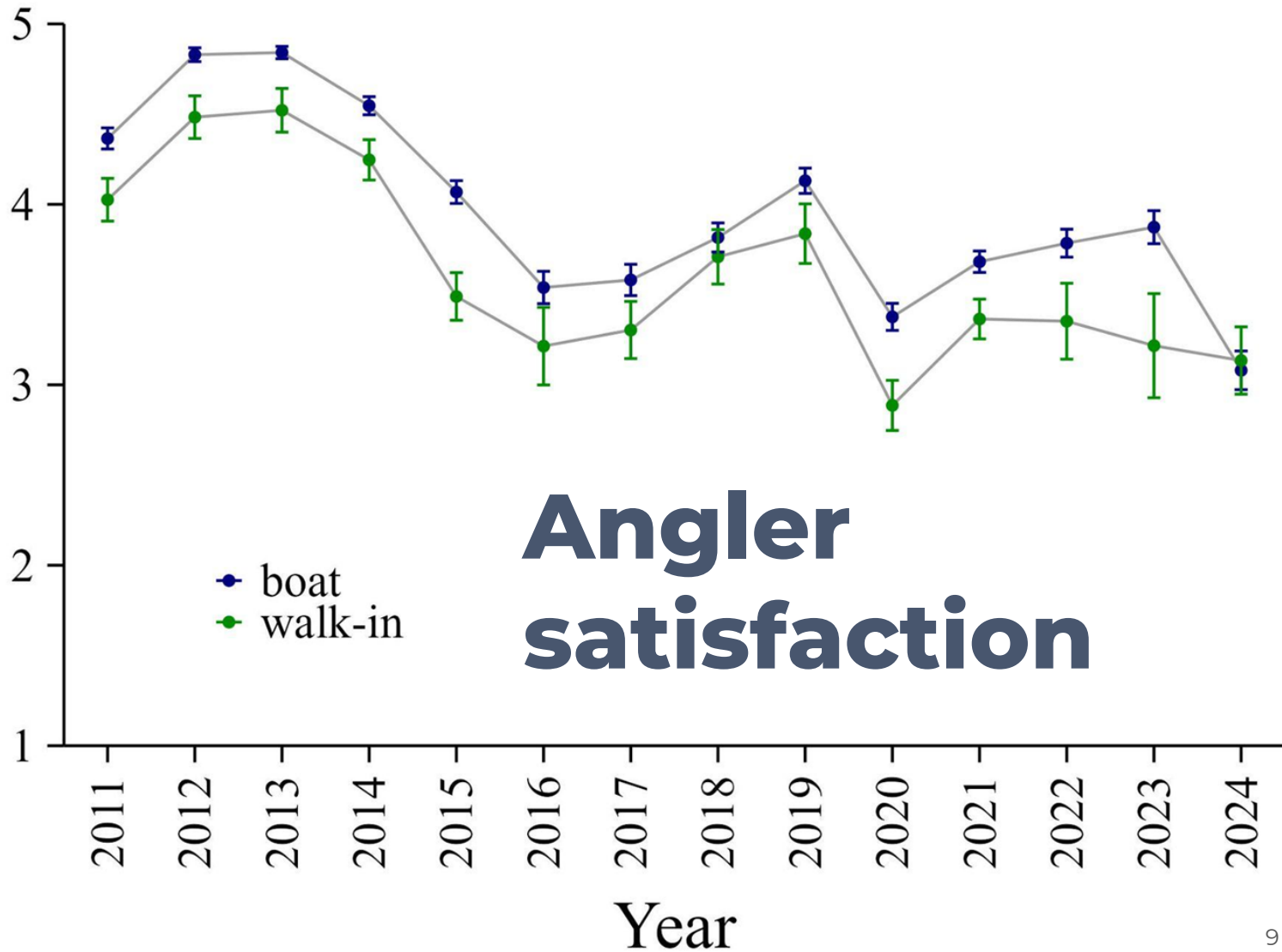
Rainbow Trout

Length frequency and
lack or recruitment of
Rainbow Trout

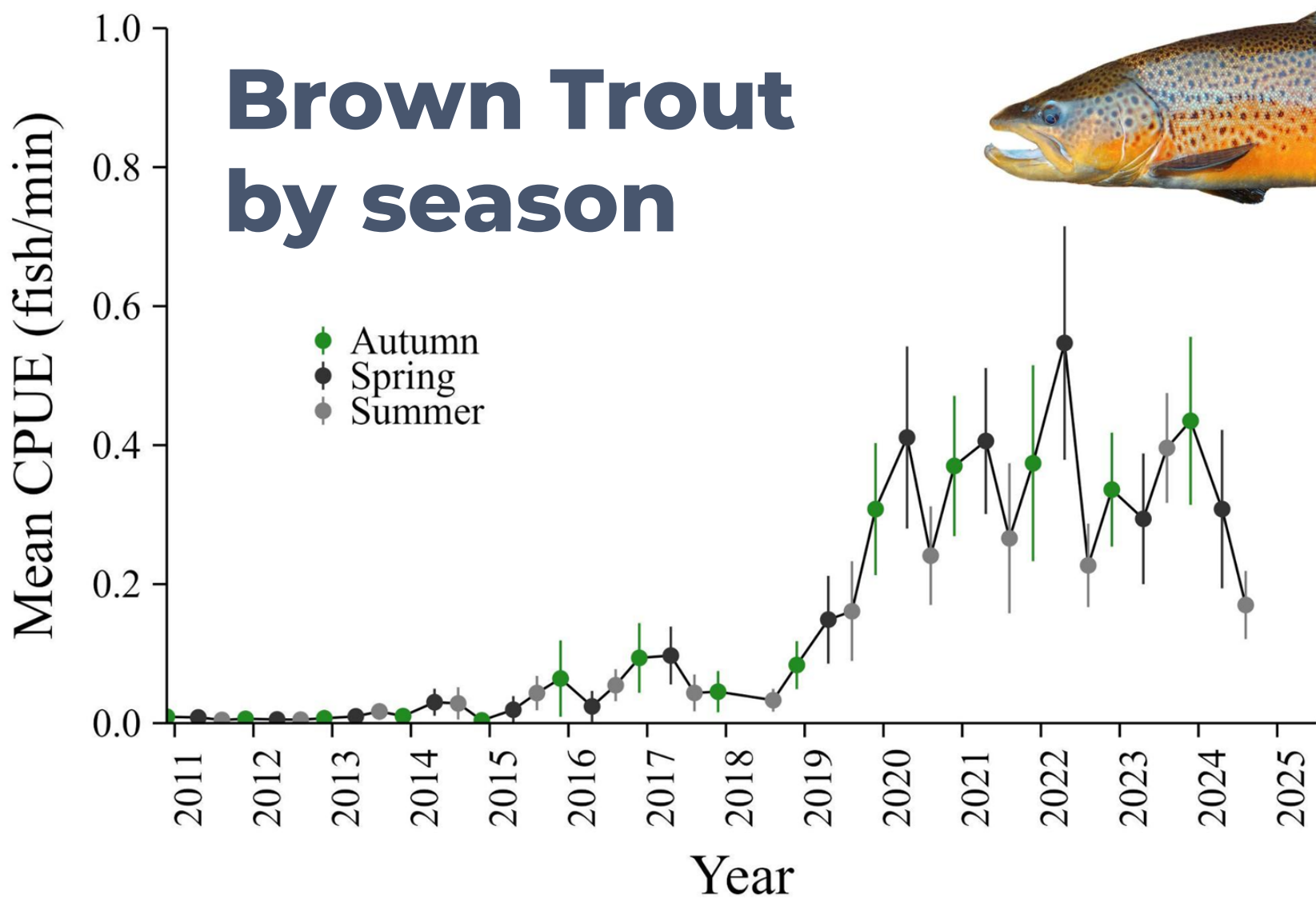




Angler Satisfaction
(Annual mean)



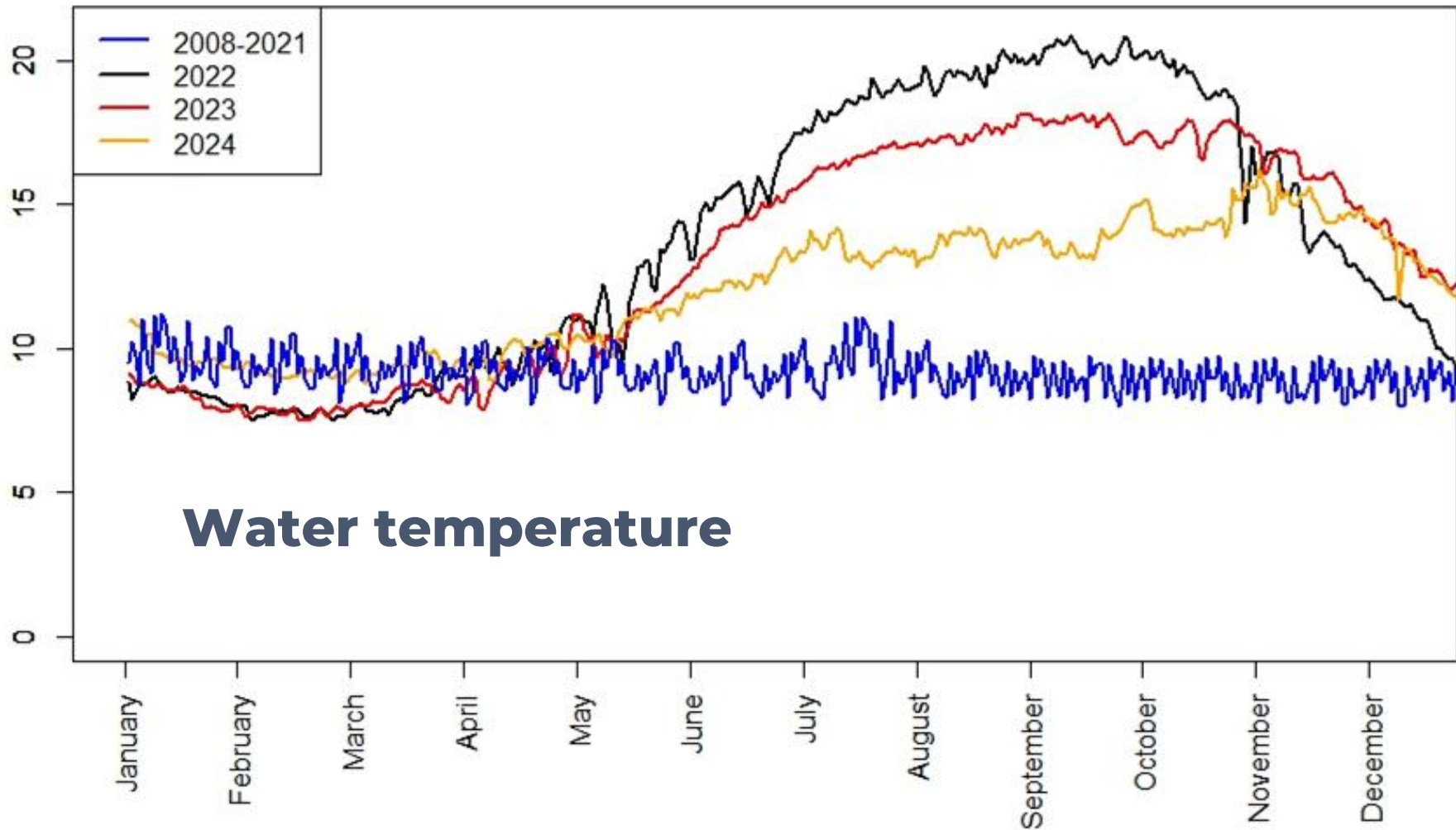
Brown Trout by season



Mean Daily Temperature(C)

- 2008-2021
- 2022
- 2023
- 2024

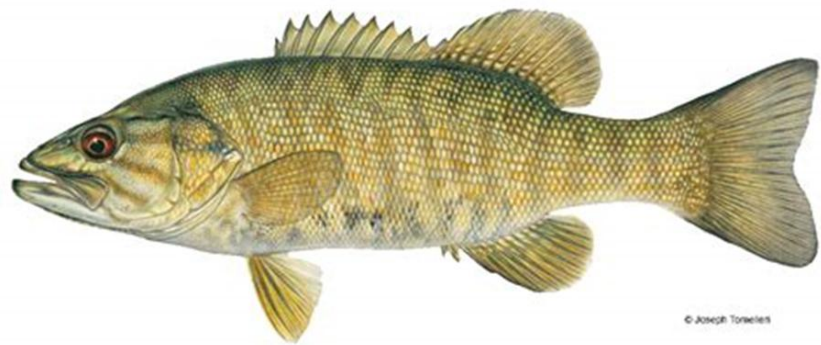
Water temperature



Coolwater & warmwater fish spawning in 2022

Young of the year discovered in 2022 in the slough at -12

- Smallmouth Bass
- Common Carp
- Green Sunfish



© Joseph Tomelers



What do we

do?

- Incentivized Harvest Program
- “Rapid Response”
 - Electrofishing every other week
 - Lees Ferry reach (Glen Canyon National Recreation Area)
 - Paria Riffle to Badger Rapid (Grand Canyon National Park)
 - Seining
 - Paria Riffle to Badger Rapid (GCNP)
- Modify flows to adjust temperature
- Modify the slough



— BUREAU OF —
RECLAMATION



Western Area
Power Administration

Brown Trout Incentivized Harvest Program (NPS)



Goal: to reduce the abundance of Brown Trout within Lees Ferry to reduce the threat to native fishes downstream

- Began 11 November 2020
- \$462,648 paid out
- On hold in 2025

Year	Number of Brown Trout Harvested
2020	72
2021	568
2022	1,667
2023	3,290
2024	766
2025	?
Total Result	6,363

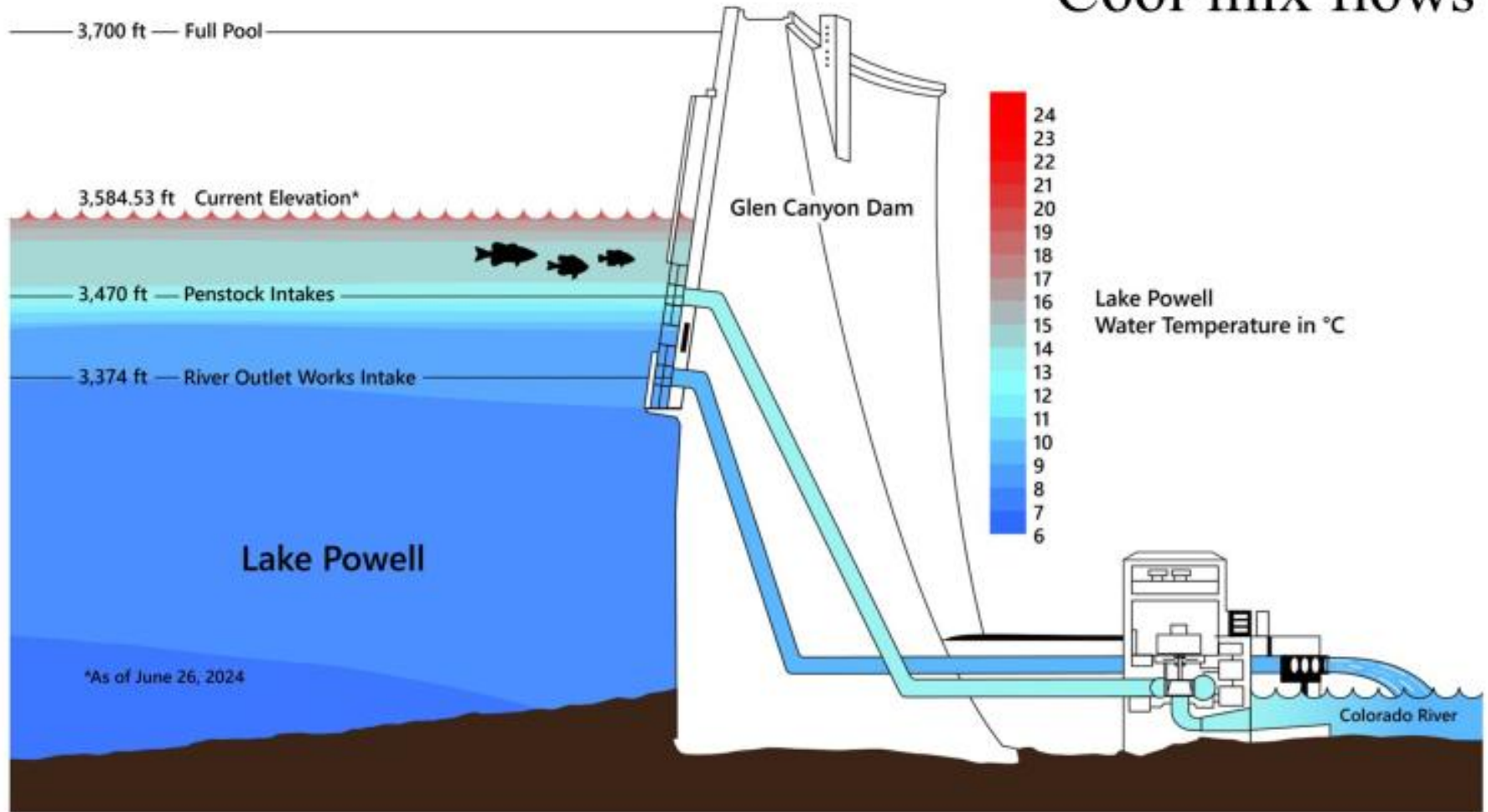


July 19 to
Nov 18,
2024

Cool-mix flow



Cool-mix flows





Legend

 Closure Area



Source: Esri, DigitalGlobe,
GeoEye, Earthstar, USDA,
USGS, AeroGRID, IGN, and the
GIS User Community

Slough modifications

Coordinate System: WGS 1984 Web Mercator Auxiliary Sphere
Projection: Mercator Auxiliary Sphere
Datum: WGS 1984
False Easting: 0.0000
False Northing: 0.0000
Central Meridian: 0.0000
Standard Parallel 1: 0.0000
Auxiliary Sphere Type: 0.0000
Units: Meter

0 130 260 520 780 Feet



Summary

- Rainbow Trout fishing not likely to improve in the short term
 - Warmer water, lower DO
 - Increasing warmwater & coolwater nonnatives
 - Reduced recruitment
 - Transition to a warmwater fishery

Acknowledgements



- Past and present AZGFD employees and interns
- Steve Harding - contractor who collected creel data for 11 years
- USGS - GCRMC - logistics
- Humphrey's Summit., St. Judes Ltd., & Ceiba - for contracted boat operators